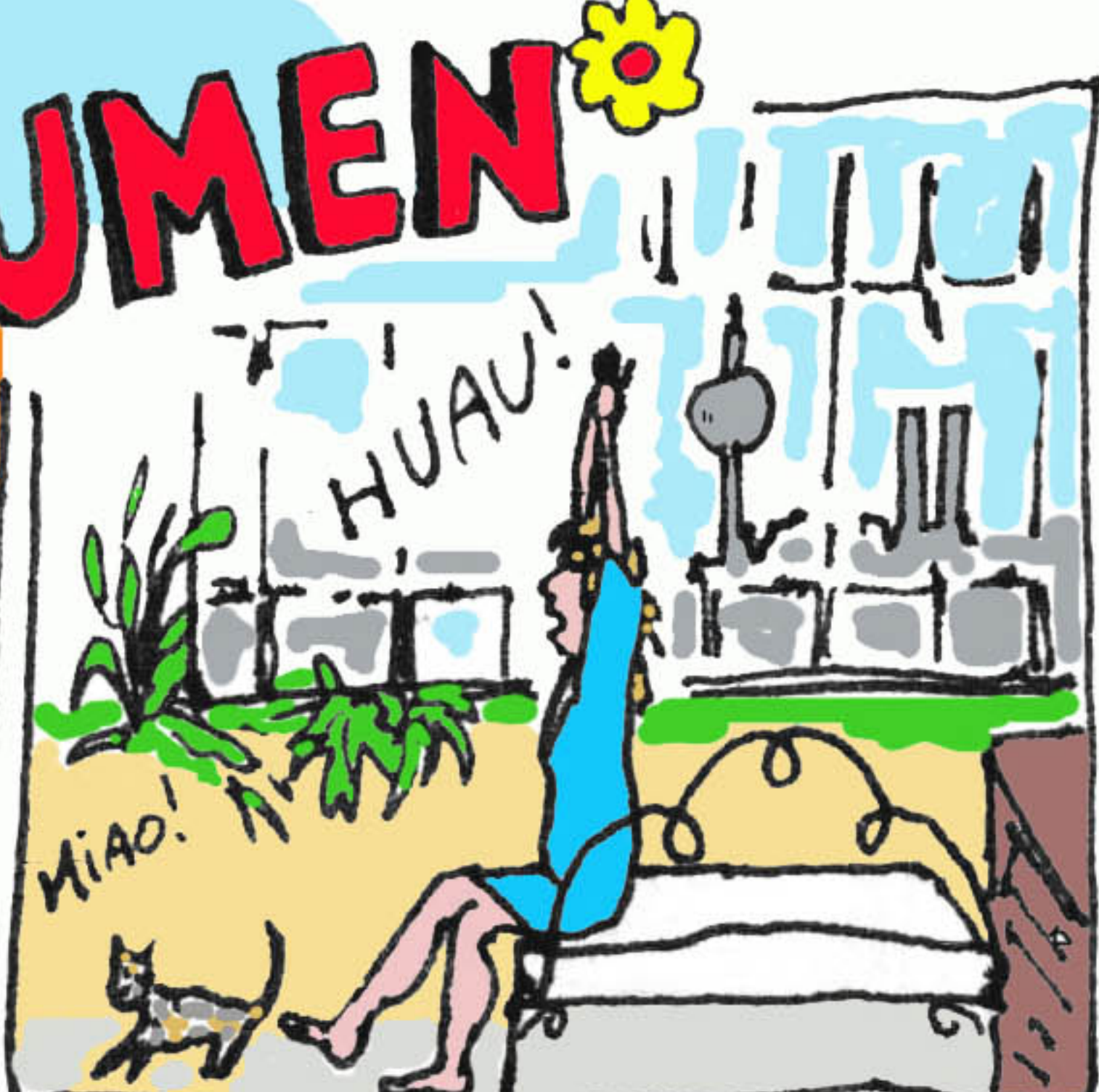




UNA MATTINA D'INVERNO A BERLINO-QUARTIERE KREUZBERG

MARK BLUMEN

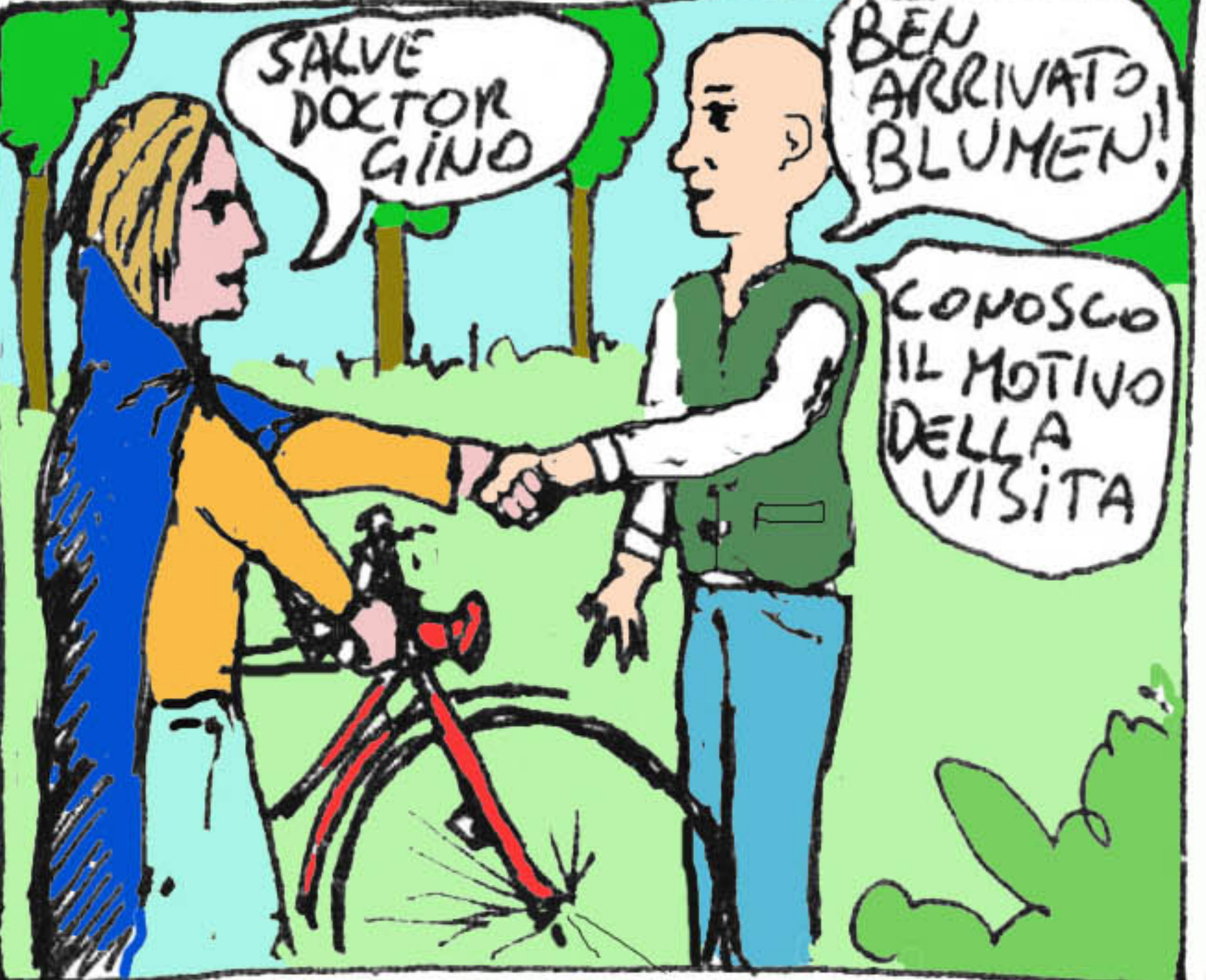
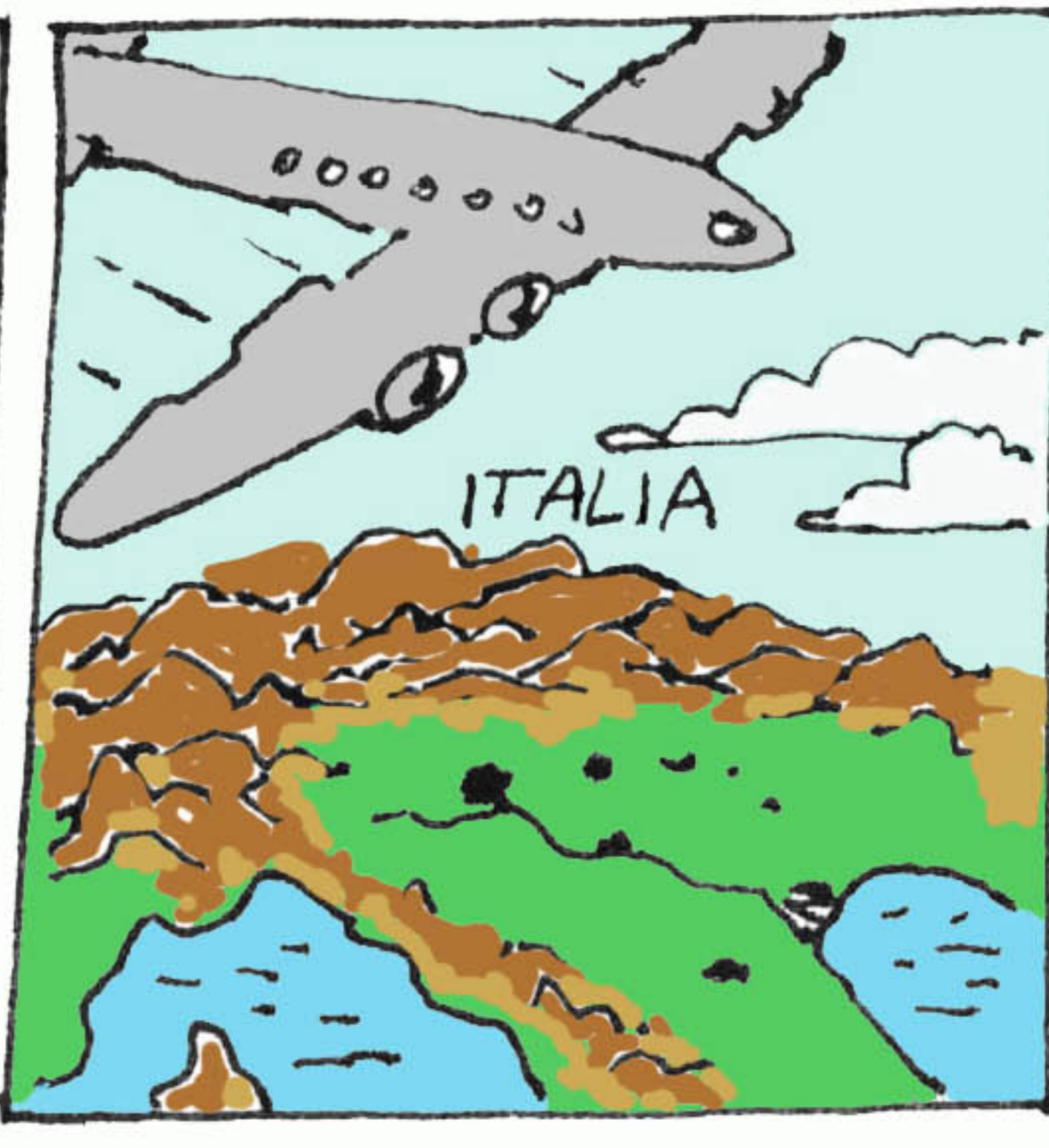


AGENTE SPECIALE B.S* DELLA COMUNITA' EUROPEA EX GIOCATORE DI RUGBY

* BUCHI STORICI



INTERNO DI UNA EX FABBRICA...



* GIARDINO ETERNAMENTE VERDE



* CAMUFFATORI STORICI

FINE